



<http://www.hiroinc.com>



## HiRO H50224 USB 3.0 to Gigabit Adaptor

# User's Manual

## **ABOUT THIS MANUAL**

This manual provides a beginner's introduction to installing, configuring and using the USB3.0 Gigabit Ethernet Adapter. Information in this document has been carefully checked for accuracy; however, no guarantee is given to the correctness of the contents. The information in this document is subject to change without notice. The manufacturer makes no representations or warranties, either expressed or implied, with respect to the contents hereof and specifically disclaims any warranties, merchantability, or fitness for any particular purpose.

## **SAFETY INSTRUCTIONS**

Always read the safety instructions carefully:

- Keep this User's Manual for future reference
- Keep this equipment away from humidity
- If any of the following situation arises, get the equipment checked by a service technician:
  - The equipment has been exposed to moisture.
  - The equipment has been dropped and damaged.
  - The equipment has obvious sign of breakage.
  - The equipment has not been working well or you cannot get it to work according to the User's Manual.

## **COPYRIGHT**

This document contains proprietary information protected by copyright. All rights are reserved. No part of this publication or documentation accompanying this product may be reproduced in any form or by any means or used to make any derivative such as translation, transformation, or adaptation without permission of the manufacturer.

## **TRADEMARKS**

All trademarks and registered trademarks are the property of their respective owners or companies.

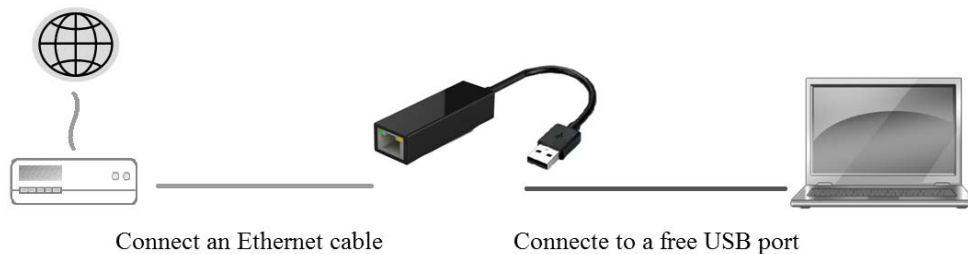
# Table of Contents

<a href="#">HiRO H50224 USB 3.0 to Gigabit Adaptor</a> .....	i
<b>1. Introduction</b> .....	<b>1</b>
Features .....	1
Package Contents .....	2
System Requirements.....	2
LED Status .....	2
<b>2. Installation</b> .....	<b>3</b>
Driver installation .....	3
On Windows® Operating Systems .....	3
On Mac OSX .....	5
Hardware installation .....	7
Verifying the Installation.....	7
on Windows® Operating Systems .....	7
on Mac OSX .....	8
<b>3. Uninstalling the Driver</b> .....	<b>9</b>
Uninstalling the Driver.....	9
on Windows® Operating Systems .....	9
<b>4. Specifications</b> .....	<b>11</b>
<b>5. Regulatory Compliance</b> .....	<b>13</b>
FCC Statement.....	13
CE .....	13
WEEE Information .....	13

# 1. Introduction

HiRO H50224 USB 3.0 to Gigabit Fast Ethernet 10/100/1000 LAN Adaptor is a high performance and simple plug-and-play Gigabit Ethernet network adaptor for desktops, notebook PC, Ultrabook, docking station, game consoles, digital-home appliances, and any embedded system using a standard USB port.

The HiRO H50224 USB 3.0 to Gigabit Fast Ethernet 10/100/1000 LAN Adapter offers a wide array of features including IPv4/IPv6 checksum offload engine, crossover detection and auto-correction, TCP large send offload and IEEE802.3az EEE (Energy Efficient Ethernet) that allows to enter a low power idle state to reduce power and to achieve a more energy efficient Ethernet. It supports dynamic cable length detection and dynamic power adjustment Green Ethernet in Gigabit mode.



## Features

- Compliant with USB3.0 , USB 2.0 specifications
- Supports all USB 3.0 power saving modes (U0, U1, U2, and U3)
- Supports IEEE 802.3az (Energy Efficient Ethernet)
- IEEE 802.3, 802.3u and 802.3ab compatible
- Supports dynamic cable length detection and dynamic power adjustment Green Ethernet (Gigabit mode only)
- Supports IPv4/IPv6 packet Checksum Offload Engine (COE) to reduce CPU loading, including IPv4 IP/TCP/UDP/ICMP/IGMP & IPv6 TCP/UDP/ICMPv6 checksum check & generation
- Supports full duplex operation with IEEE 802.3x flow control and half duplex operation with back-pressure flow control
- Supports Jumbo frame

## Package Contents

Before installation, please check the items of the package. The package should contain the following items:

- USB 3.0 Gigabit Ethernet Adapter     x1
- Driver CD with User's Manual        x1
- Quick Installation Guide             x1

## System Requirements

- One available USB port
- Windows® XP, Windows® 7, Windows® 8; Mac OS X 10.6 and later

## LED Status

LED	Color	Description
Status	Green	Blinking: LAN activity, when data is being transferred on the Ethernet network to host system.
Link	Amber	On for connection to a 1000Mbps network. Off for connection to a 100/10Mbps network.

## 2. Installation

### Driver installation

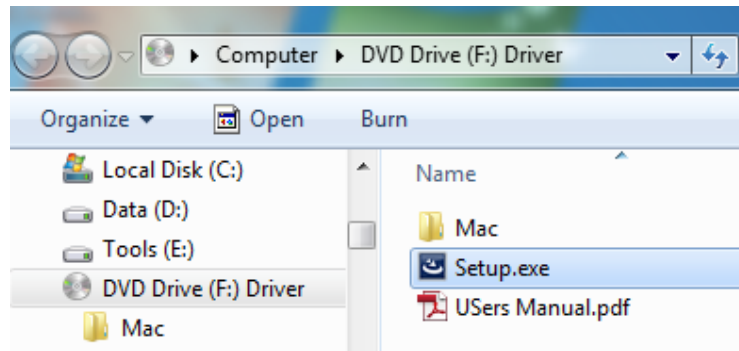
#### On Windows® Operating Systems

---

**Caution: DO NOT** connect the Ethernet Adapter to your computer before you install the provided driver.

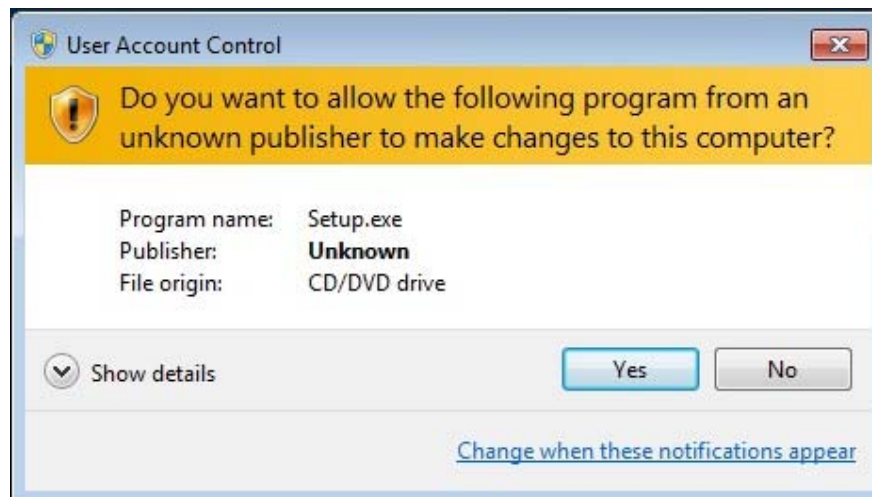
---

1. Insert the provided Driver CD into your disc drive. Please locate and double-click the **setup.exe** file under **x:\Driver\** where x is your disc drive letter.

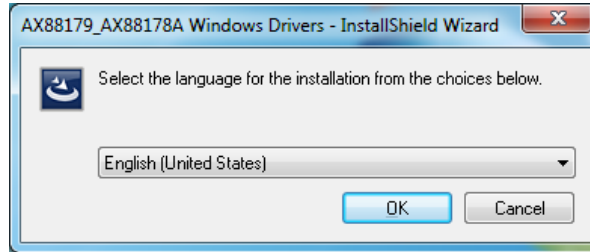


Notice :

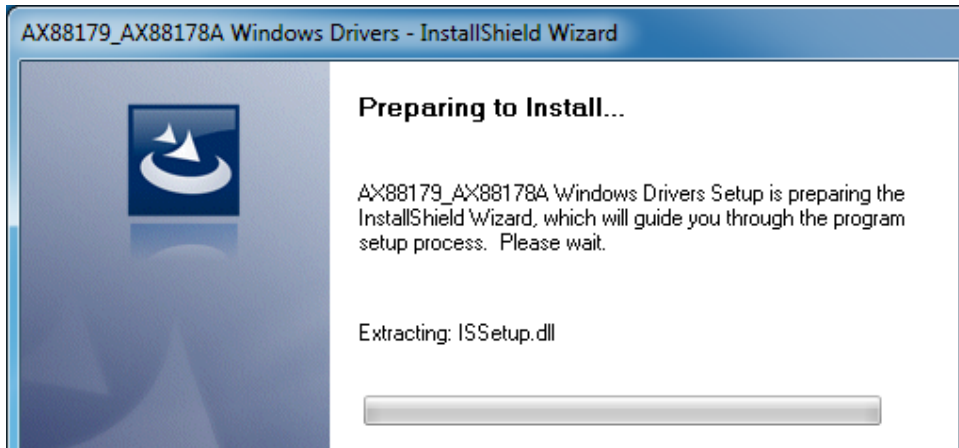
It will encounter a **User Account Control** dialog box when attempting to install a program, please click **Yes** to start the installation.



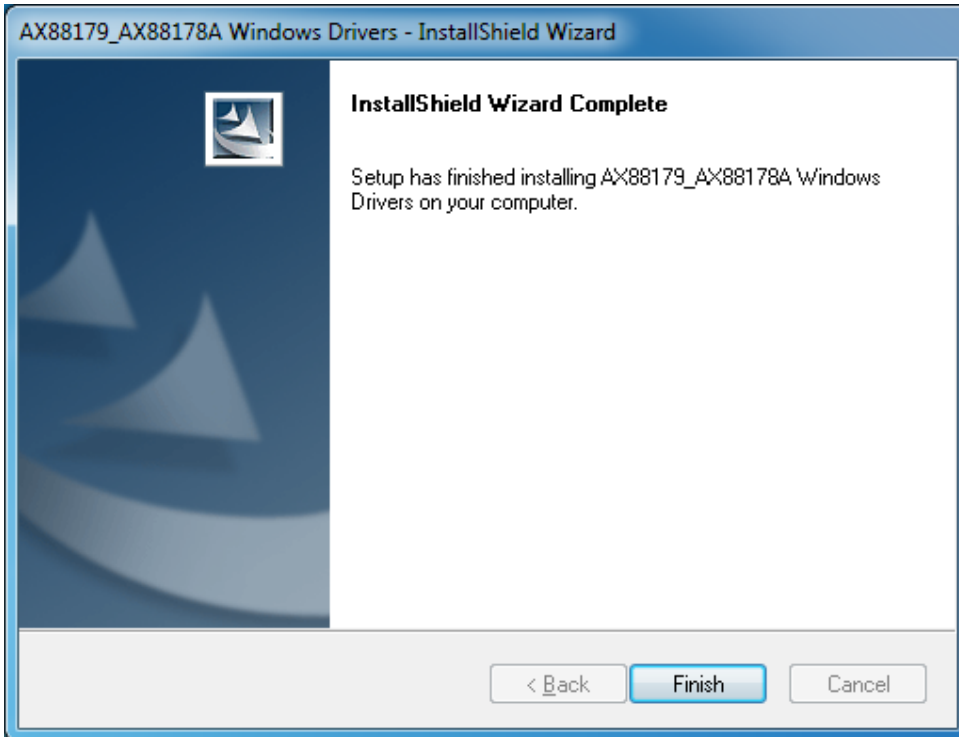
2. Select the language then Click on **OK** to continue this installation.



3. Wait a while for the program to install the driver.

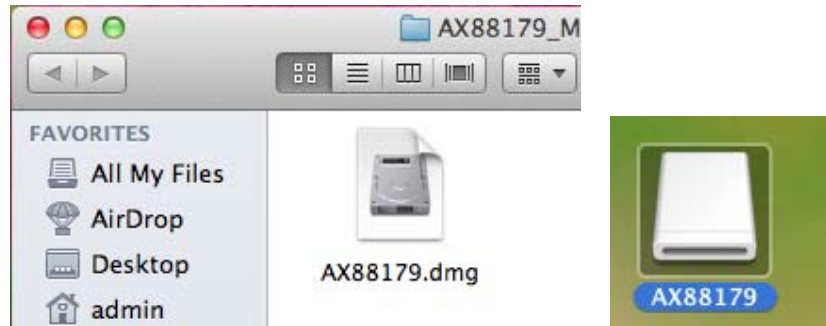


4. When the installation is done, click **Finish**.

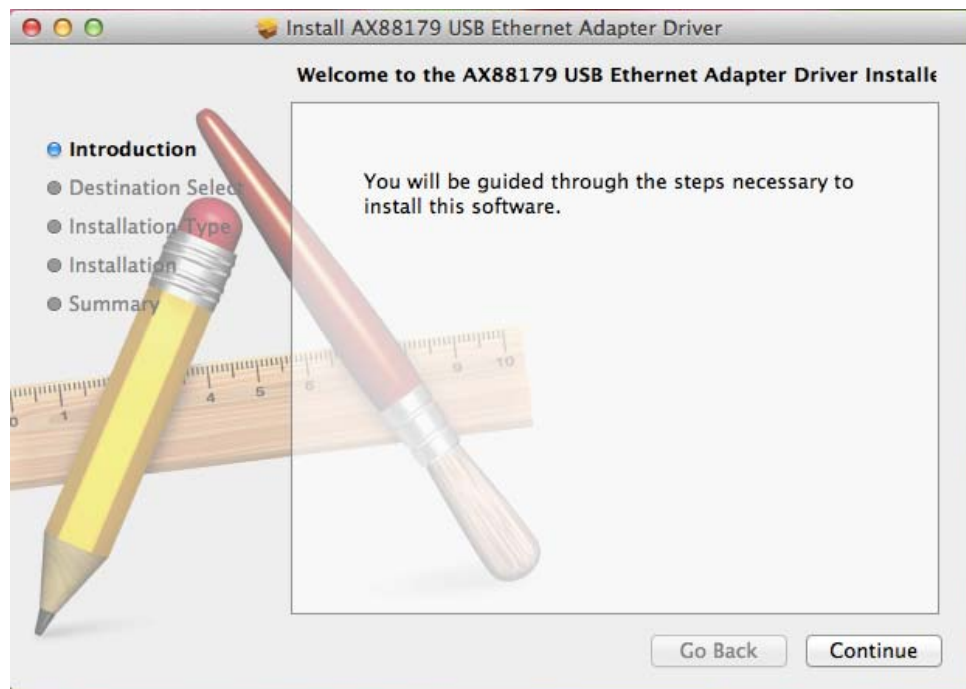


## On Mac OSX

1. Insert the provided driver CD into your CD-ROM drive. Double-click the CD and navigate to the directory of **\DriverMac\**
2. Click the **AX88179.dmg**, the **AX88179** virtual disk will be appeared on the Desktop of your Mac OSX system. (This "DISK IMAGE" virtual disk will be auto-removed after rebooting Mac OSX system.)

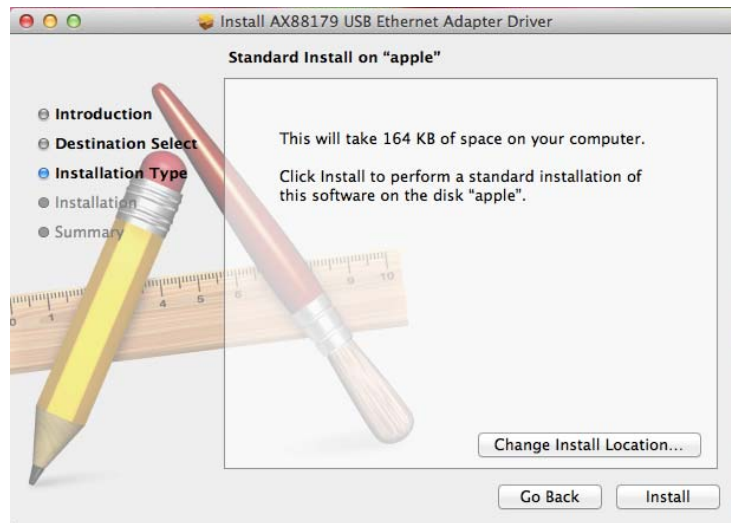


3. Click the **AX88179.pkg**, the following driver setup dialog will appear. Click the **Continue** button to start the installation operation and follow the instructions to continue the installation.

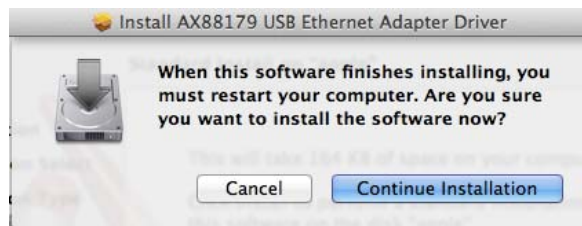




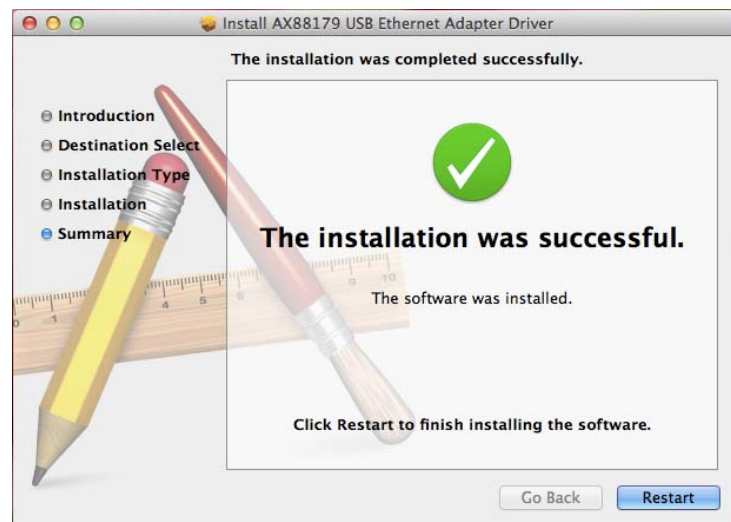
4. Click the **Install** button to continue the installation operation.



5. Click the **Continue Installation** button to continue the installation operation.



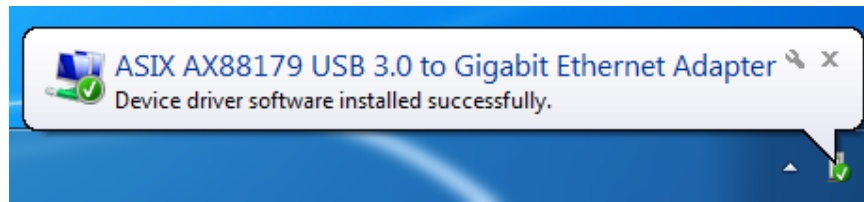
6. Click the **[Restart]** button to restart Mac OSX system to take effect the revised driver installation.



Now the installation is complete. You can connect the adapter to a network device by an Ethernet cable:

## Hardware installation

1. Connect the Gigabit Ethernet adapters USB end to a free USB port of your computer. Then a pop-up message will appear in the notification area indicating the installation is complete.



\* Actual strings depend on your operation system. These screen shots are from Windows<sup>®</sup>7 and might vary slightly for each operation system.

2. Connect an Ethernet cable to the Ethernet port on the adapter.
3. Connect the other end of the Ethernet cable to your network hub, switch or router.

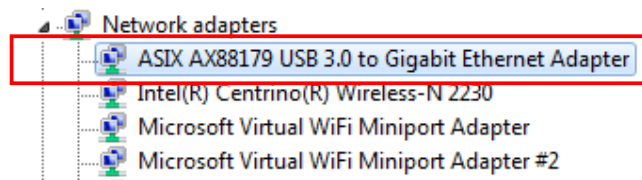
## Verifying the Installation

### on Windows<sup>®</sup> Operating Systems

Once you finish the installation, you can open Windows<sup>®</sup> **Device Manager** to verify if your Ethernet Adapter is properly installed. To access the **Device Manager**:

- On Windows<sup>®</sup> 7: Right-click **Computer** on the desktop and click **System Properties>Device Manager**
- On Windows<sup>®</sup> XP: Right-click **My Computer** on the desktop and click **Properties > (Hardware) > Device Manager**.

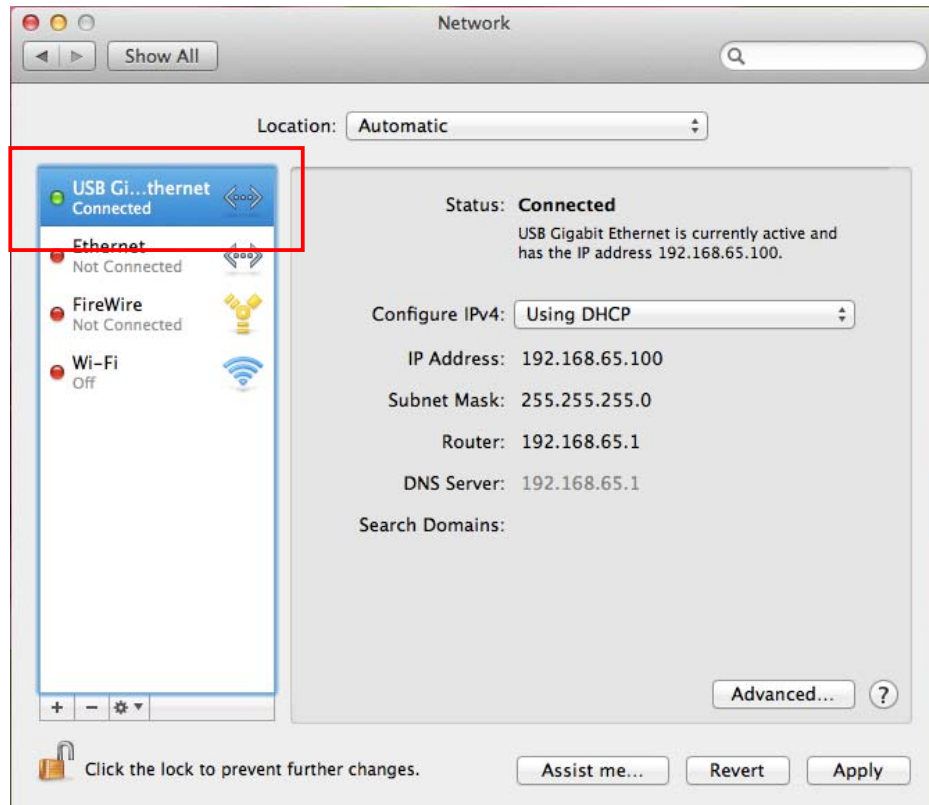
In the **Network adapters** group, an item named **ASIX AX88179 USB3.0 to Gigabit Ethernet Adapter** should be displayed.



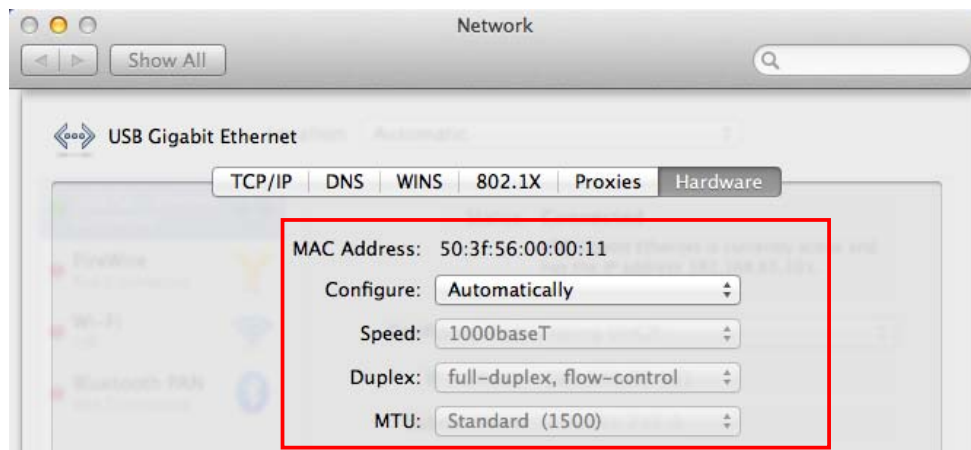
If there is a question or exclamation mark next to that item, then the driver is not properly installed. Please delete the item, select the **Delete the driver software for this device** option (if provided), unplug the adapter from your computer and then repeat the installation steps.

## on Mac OSX

After booting up your Mac OSX system, plug USB dongle onto the USB port of your Mac OSX system and there is a new Ethernet network interface is available.



Also navigate to **System Preference > Network**, please click on the Ethernet Adapter then Click **Advanced > Hardware** and you will see the speed of your internet..



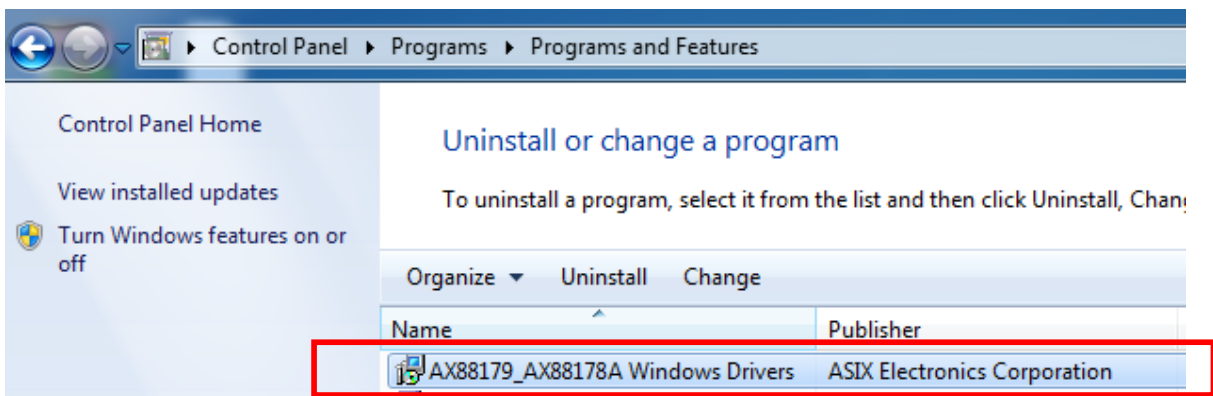
## 3. Uninstalling the Driver

### Uninstalling the Driver

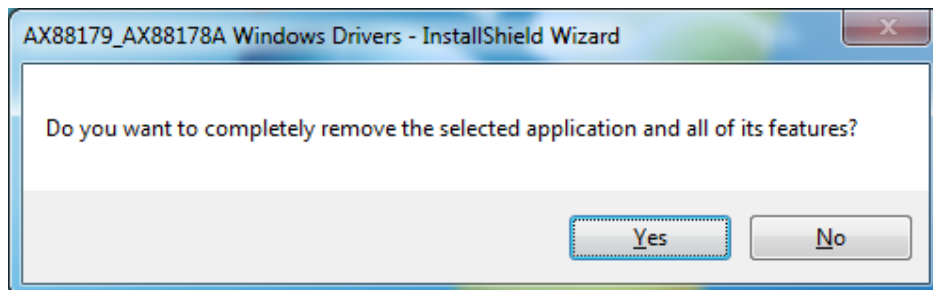
#### on Windows® Operating Systems

Please take these steps to uninstall Driver:

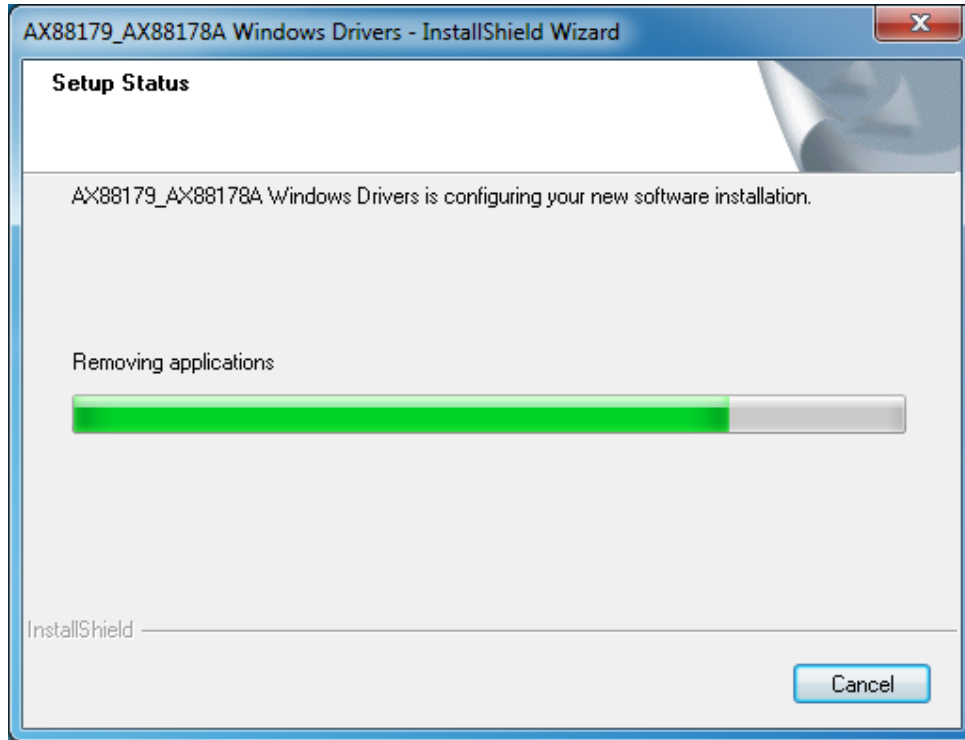
1. Open the **Control Panel, Programs and Features** and double-click **Uninstall a Program** on Windows 7 or **Add or Remove Programs** on XP.
2. Select **AX88179\_AX88178A Windows Driver** and click Uninstall



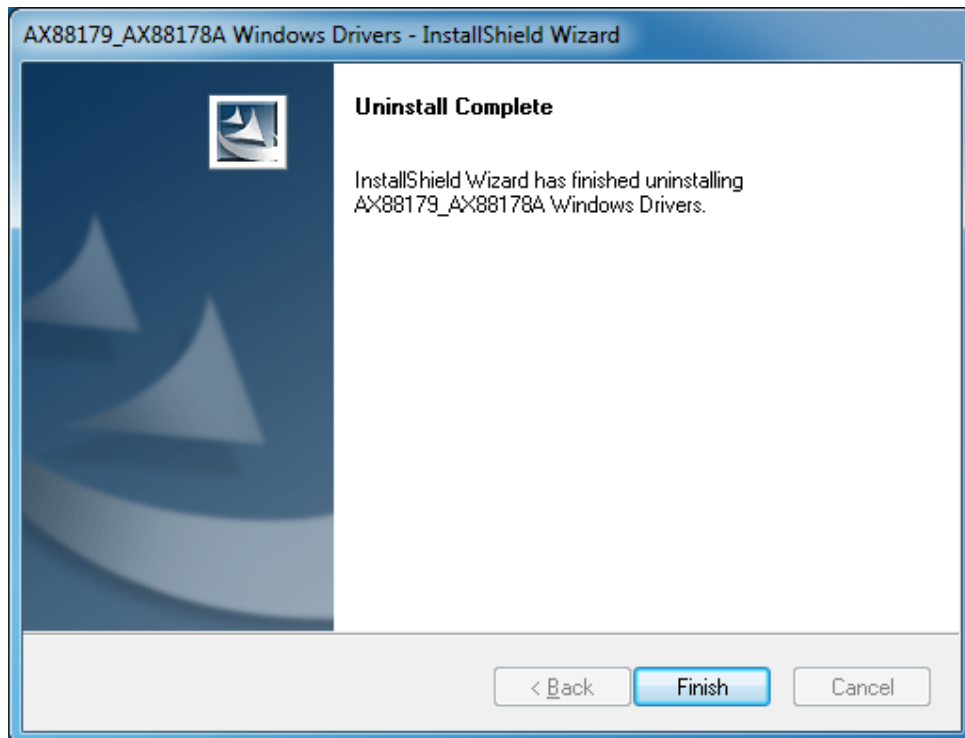
3. Select **[Yes]** to continue the uninstall process.



- The uninstall process starts automatically.



- Click **Finish** to complete uninstalls process.



## 4. Specifications

General	
<b>Host Interface</b>	USB 3.0 (and USB 2.0 compliant)
<b>Operating System Support</b>	<ul style="list-style-type: none"> <li>● Windows® XP, Windows® 7, Windows® 8</li> <li>● Mac OS10.6 and later.</li> </ul>
Ports and Connectors	
<b>Upstream</b>	1 x Upstream USB 3.0 Port (Type A male Connector)
<b>Ethernet</b>	1 x Ethernet Port (RJ-45 connector)
LED	
<b>Link LED (Amber)</b>	<ul style="list-style-type: none"> <li>● On: When connection to a 1000Mbps network</li> <li>● Off: When connection to a 10/100Mbps network</li> </ul>
<b>Status LED (Green)</b>	<ul style="list-style-type: none"> <li>● On/Blinking: LAN activity.</li> <li>● Off: No network traffic.</li> </ul>
Power	
<b>Power Mode</b>	USB Bus -powered
<b>Power Consumption</b>	<ul style="list-style-type: none"> <li>● Operating Mode: 420 mA</li> <li>● Suspend Mode : 38 mA</li> </ul>
Physical Specifications	
<b>Housing Material</b>	ABS (Plastic)
<b>Dimensions</b>	<ul style="list-style-type: none"> <li>● Main body without cable: 84 mm(W) x 23 mm(D) x 15 mm(H)</li> <li>● Main body with cable: 97 mm (W) x 23 mm(D) x 15 mm(H)</li> </ul>
<b>Weight</b>	Approximately 46 g (including cable)
Environmental Specifications	
<b>Operating Temperature</b>	10-40°C
<b>Storage Temperature</b>	-10~80°C

<b>Relative Humidity</b>	< 85% non-condensing
<b>Regulatory Compliances</b>	
<b>Safety, EMI</b>	FCC, CE
<b>RoHS</b>	RoHS compliant

\* Specification is subject to change without further notice.

## 5. Regulatory Compliance

### FCC Statement

This device complies with Part 15 of the FCC Rules. Operation is subject to the following two conditions:

- (1) This device may not cause harmful interference, and
- (2) this device must accept any interference received, including interference that may cause undesired operation.

FCC Caution:

Any changes or modifications not expressly approved by the party responsible for compliance could void the user's authority to operate this equipment.

### CE

This device complies with the following regulations:

EN 55 022: CLASS B

### WEEE Information

For EU (European Union) member users:

According to the WEEE (Waste electrical and electronic equipment) Directive, do not dispose of this product as household waste or commercial waste. Waste electrical and electronic equipment should be appropriately collected and recycled as required by practices established for your country. For information on recycling of this product, please contact your local authorities, your household waste disposal service or the shop where you purchased the product.

