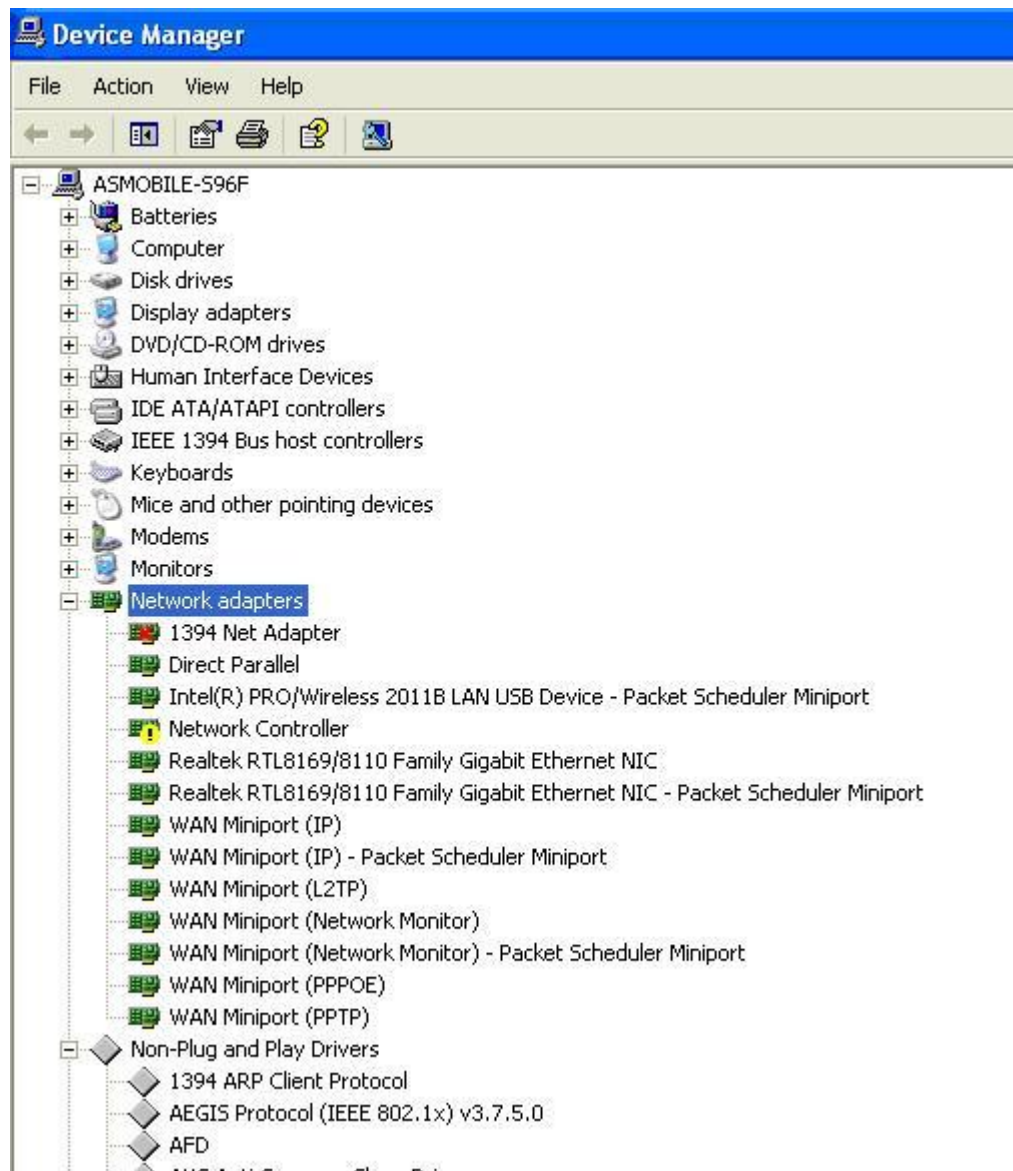


Notes A manual installation will install the driver for the Wi-Fi adapter only; it will not install any associated software therefore you have to use the built-in Windows wireless utility.

1. Please first insert the adapter into a vacant USB port. Windows XP will then inform you a new piece of hardware is found and begin the “Hardware Wizard.” Please cancel this.
2. Please insert the CD into your optical drive. If the automatic program shows, please cancel or EXIT.
3. Click **Start > Control Panel** . Click **System Properties** and select the **Hardware** tab. For Windows Vista/7 please click **System**.
4. Click **Device Manager** .
5. Click the + symbol in front of **Network adapters** to expand the section.



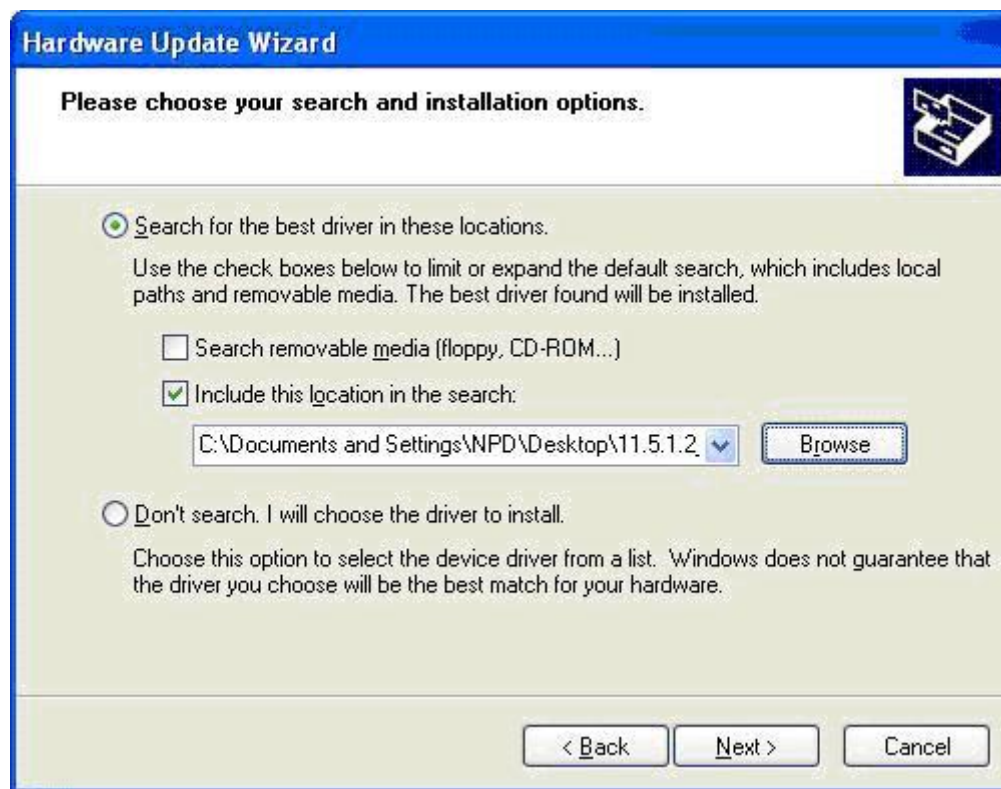
6. Right-click the **Network Controller** and click **Update Driver Software**. If the “Network Controller” is not showing but an “**Other Device**” or “**Unknown Device**” followed by “**USB Network Device**” or something similar shows, please right click on the “**USB Network Device**” then click Update Driver Software.
7. Choose **Browse my Computer** for driver software.
8. Navigate to the folder where the driver files are extracted. For our bundled CD, the directory should be shown as below:

H50069/H50169/H50170:

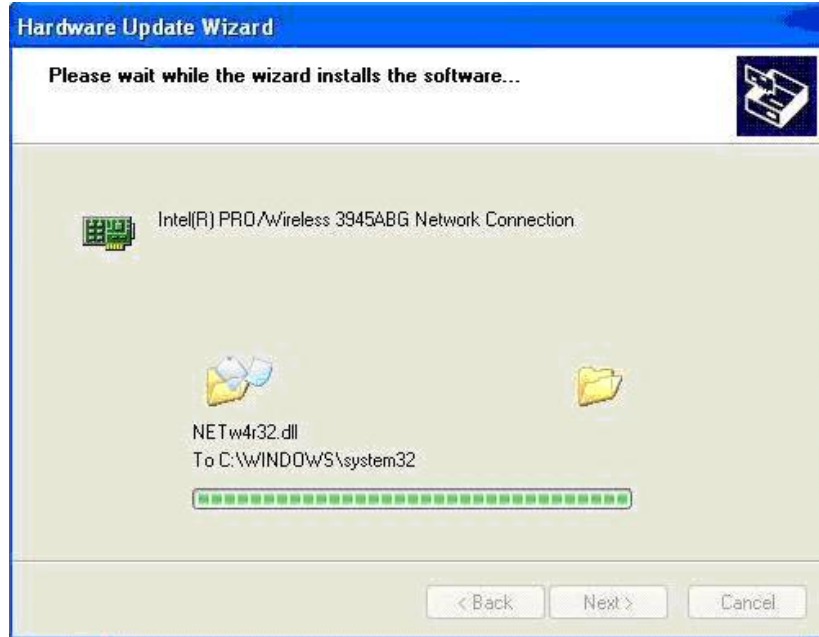
(Your Optical Drive):\11bg PCI_CARDBUS.....\RTL8185\(**Your Operation System**)

H50191/H50193/H50194:

(Your Optical Drive):\fscommand\USB Driver\LOGO_XP V19\88_91_92SU_Driver\(**Your Operation System**)



9. Click **Next** to initiate the installation.



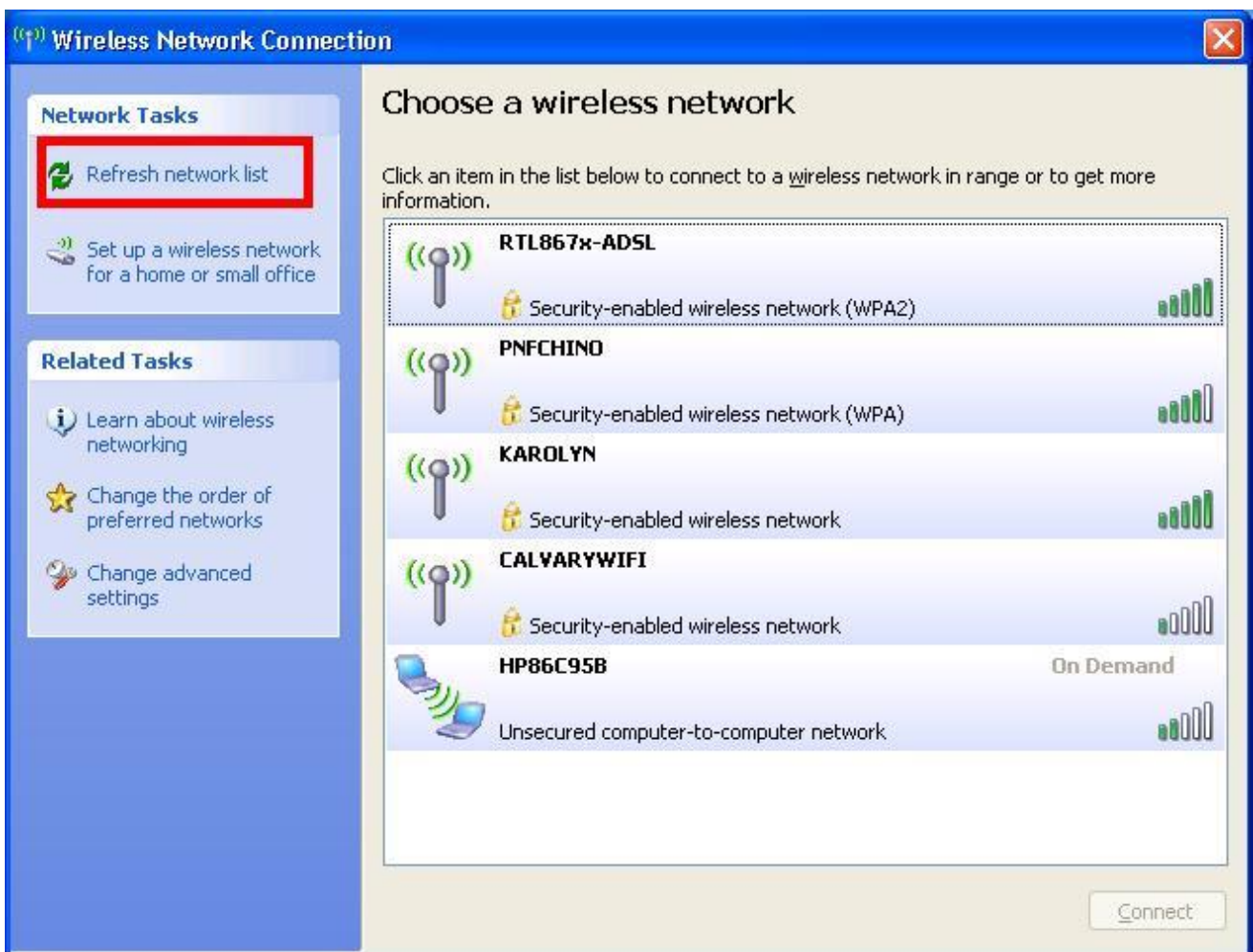
10. Click **Finish** after the installation has completed.



11. Please look at the bottom-right corner of your desktop, locate the wireless utility icon, and double-click on it. Because the wireless card has not been connected to any network at this point, it is natural to see the red “X” right next to the icon.



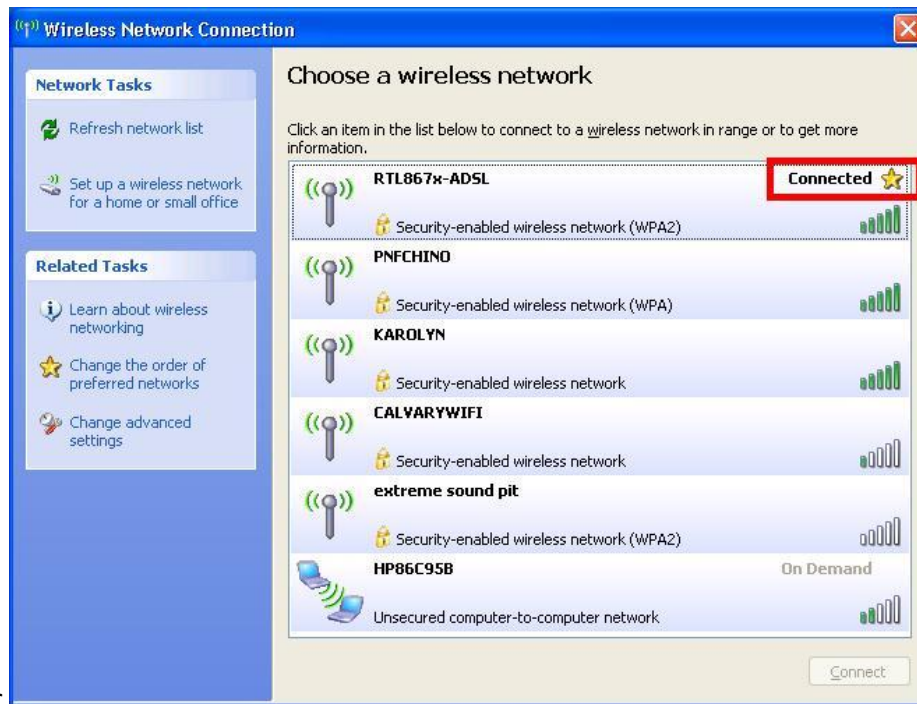
12. Once opened, please click on “Refresh Network List” to see all the networks available. Please double-click on the one you would like to connect.



13. You may be asked to enter the password if the network has security parameters set. Please enter accordingly.



14. Windows will then try to negotiate with the wireless network and establish a connection. When done, you should see the "Connected" sign accordingly, and the wireless utility on bottom-right corner should show the green, wave-like status



indicator.

