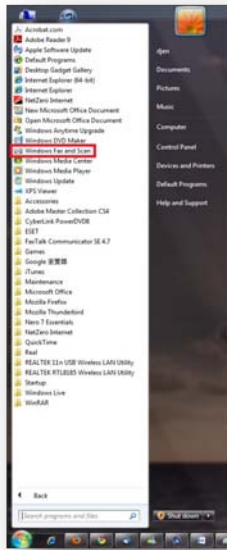


# Windows Fax & Scan Setup for Windows Vista & 7

This is a brief guide on how to setup and use our modems with Windows Fax & Scan within Windows Vista & 7. It can be applied to models H23534, H50002, H50003, H50006, H50083, H50113, H50158, H50159, H50197, and H50198. Although Windows Vista & 7 may have built-in drivers for the above models, it is recommended to either install the driver from bundled CD, or [download from our web site](#).

1. Please click on the start button and locate Windows Fax & Scan:

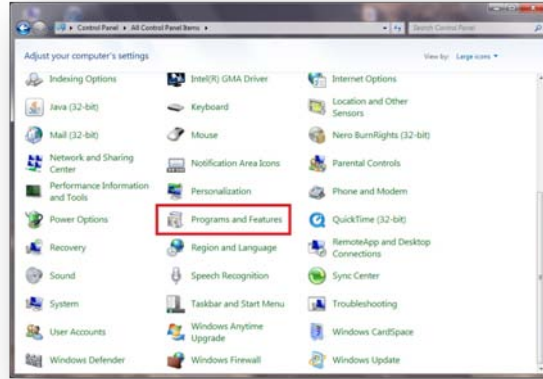


If Windows Fax & Scan does not show up in the menu, please go through the following steps to bring it up:

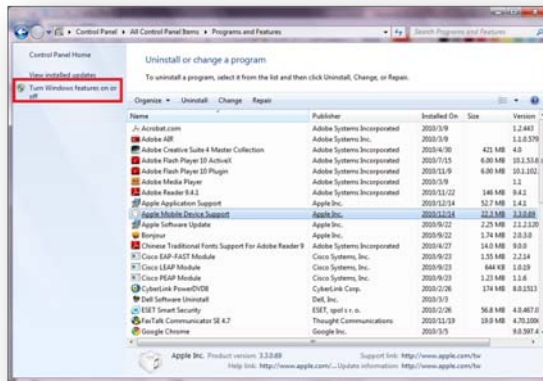
(1) Please go to your **Control Panel**. If you see 8 or 9 big icons as shown, please change the **“View By”** option, located on the top-right corner, to **“Large Icon”** instead.



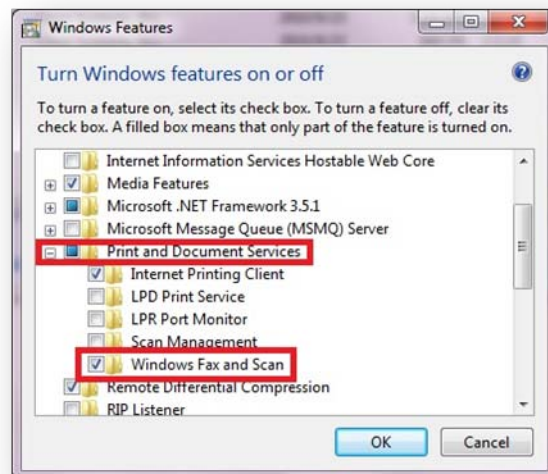
(2) Please locate and open “Program & Feature”



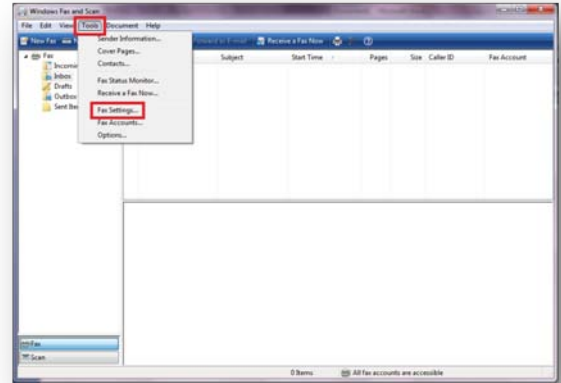
(3) Please look for a link called “Turn Windows features on or off” at the upper-left corner of new popup Window, and click on it



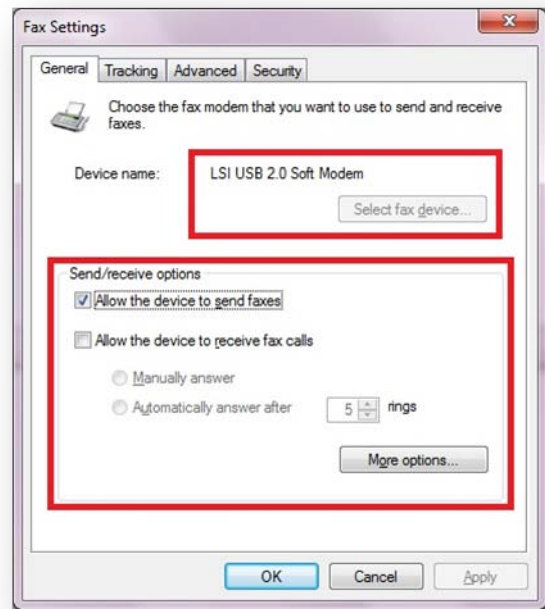
(4) On the new pop Windows Features up Windows "" please expand the line “Print and Document Services,” make sure that “Windows Fax and Scan” is checked, and click “OK” to complete.



2. Once “Windows Fax & Scan” is opened, please click on “Tools” and then “Fax Setting”



3. Please make sure that the selected modem appears. If 2 or more modems are available, please click on the button “Select fax device...” and choose the intended one. Then, please modify the “Send/receive options” to fit your criteria. Press “OK” or “Apply” when finished.



4. Microsoft has created a simple video clip on how to create fax. [Please check it out.](#) It is recommended to leave the “Dialing rule:” as **NONE** so a direct number can be entered. For business phone line that may require to press 8 or 9 to get an outside line, please add the number at the beginning accordingly.