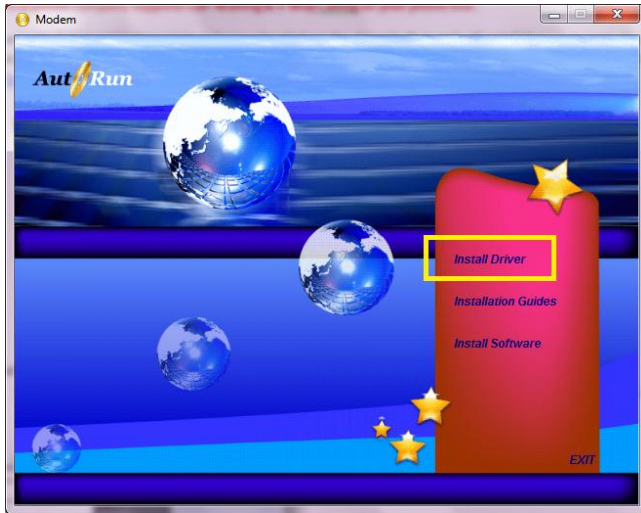


This installation guide is for running SoftMOH(Modem-On-Hold) for H50006, H50113, H50158, and H50159 under Windows 7. In order to use Modem-On-Hold feature, please make sure that your ISP (Internet Service Provider) supports V.92 standard, and your local phone company supports Call-Waiting & 3-Way calling on your phone line.

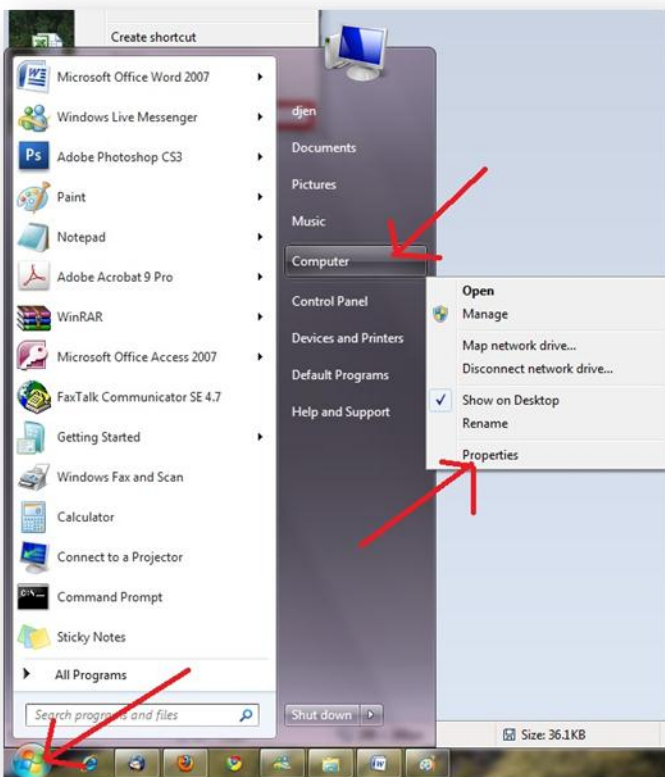
1. Windows Vista or 7 may already have the driver built-in and will install them automatically when you first install your modem. However, this particular driver may omit certain features including Modem-On-Hold; therefore it is necessary to install the complete driver from the CD, or download & install from our web site <http://www.hiroinc.com/drivers>. For more information about installation & unzip procedure, please refer to the “[General Download and Installation](#)” documentation on our web site.



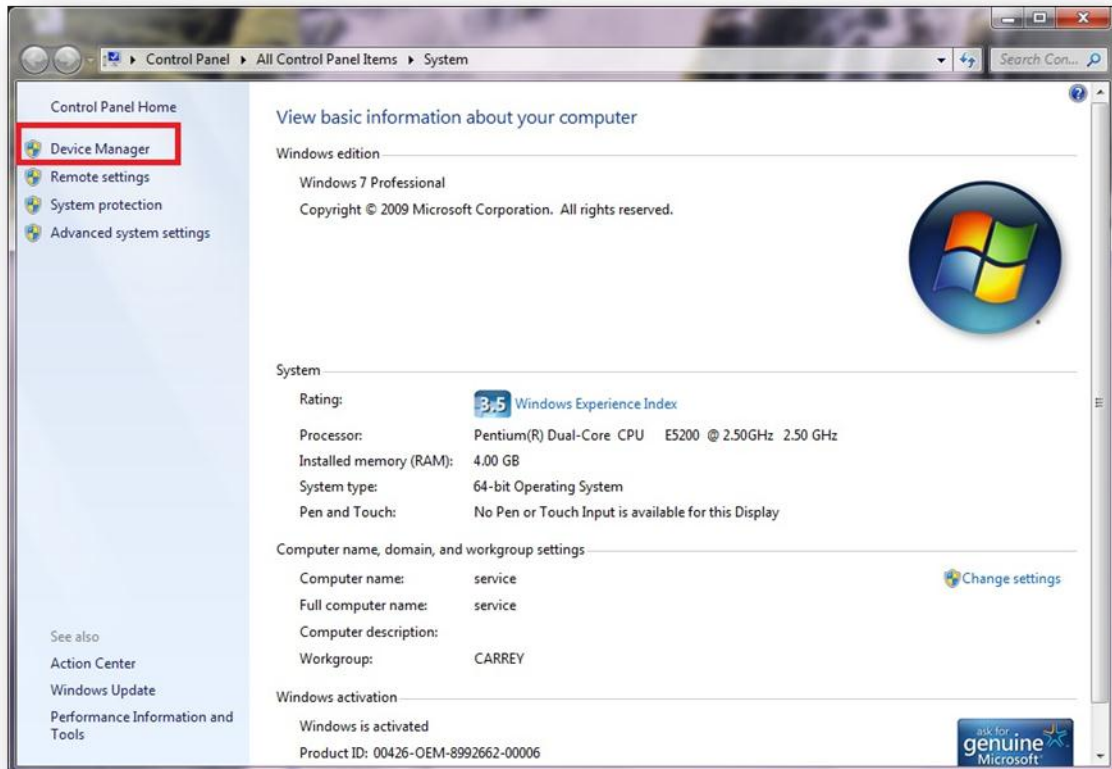
## Index of /drivers/H50006 H50158

- [Parent Directory](#)
- [README.doc](#)
- [SOFT MOH 1790 1.zip](#)
- [Windows 2000.zip](#)
- [Windows 7 32bit.zip](#)
- [Windows 7 64bit.zip](#)
- [Windows 98SE.zip](#)
- [Windows ME.zip](#)
- [Windows NT 4.0.zip](#)
- [Windows Server 2003.zip](#)
- [Windows Vista 32bit.zip](#)
- [Windows Vista 64bit.zip](#)
- [Windows XP 64bit.zip](#)
- [Windows XP.zip](#)

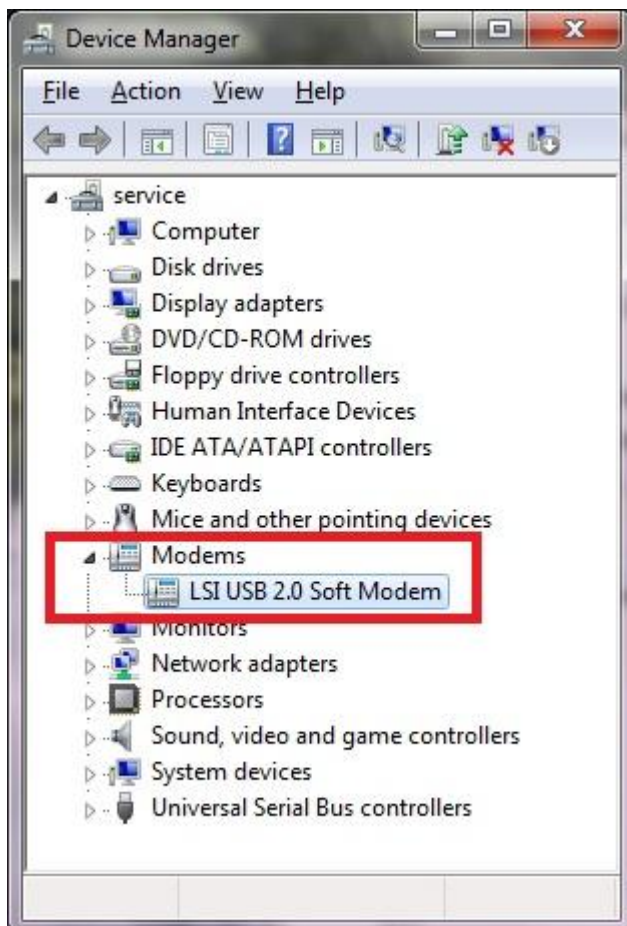
2. Install the driver accordingly, and then restart the computer. Please verify the driver version:
  - a. Look for the “**My Computer**” icon on your desktop or “**Computer**” from your starting menu. Right-click, then select “**Properties**”



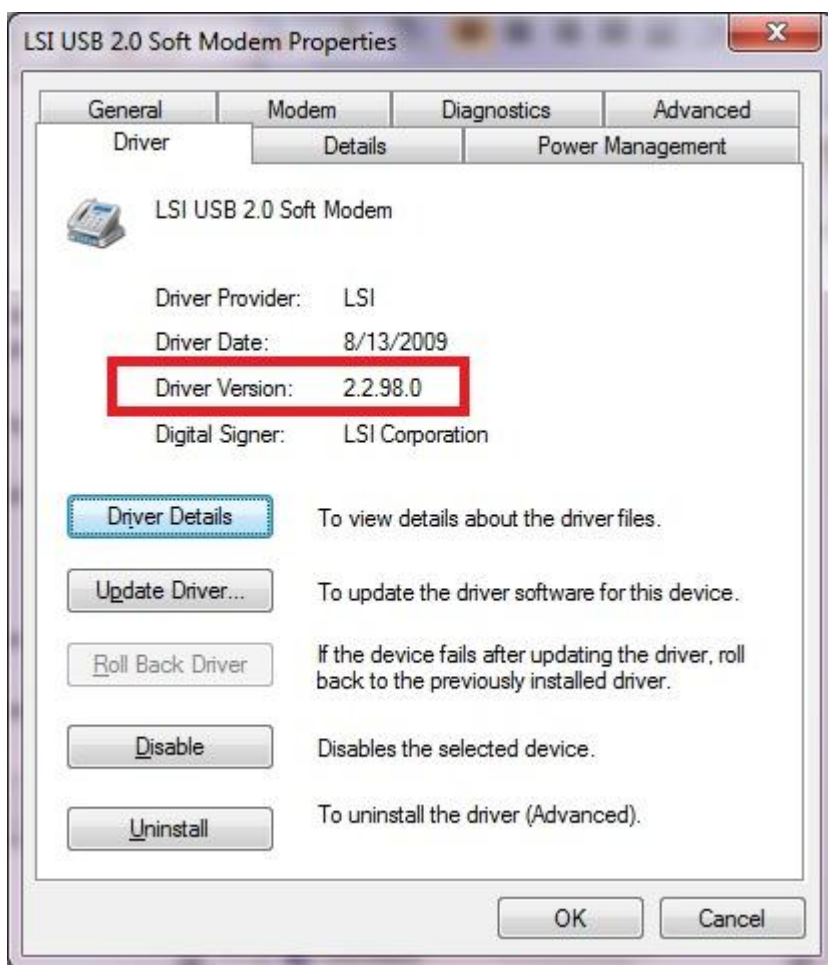
- b. On the new pop-up windows, please click on “Device Manager”



- c. On the device manager, please locate the line “Modems” and expand it. Please then double-click on the sub-line and bring out the modem’s properties.



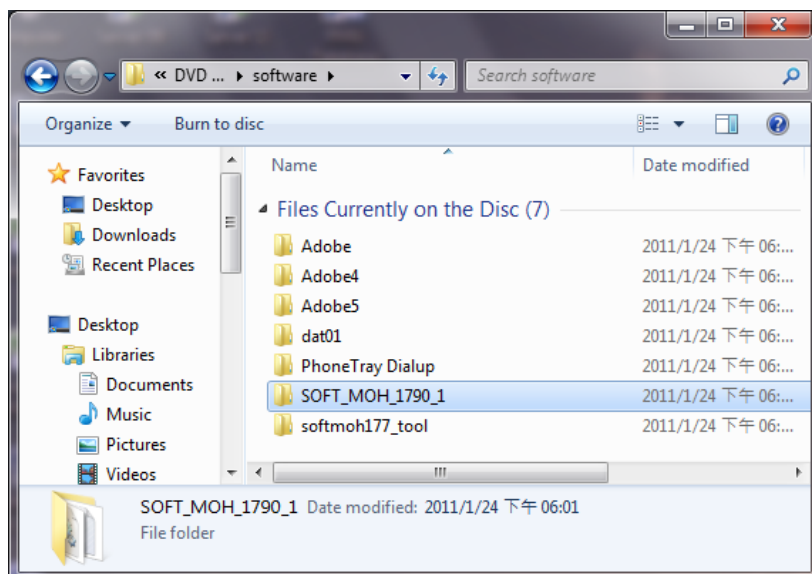
- d. On the Modem Properties, please click on the Driver tab and verify that the version. For H50006, H50113, & H50158, it is **2.2.98.0**. For H50159, it should be **2.7.1.0**.



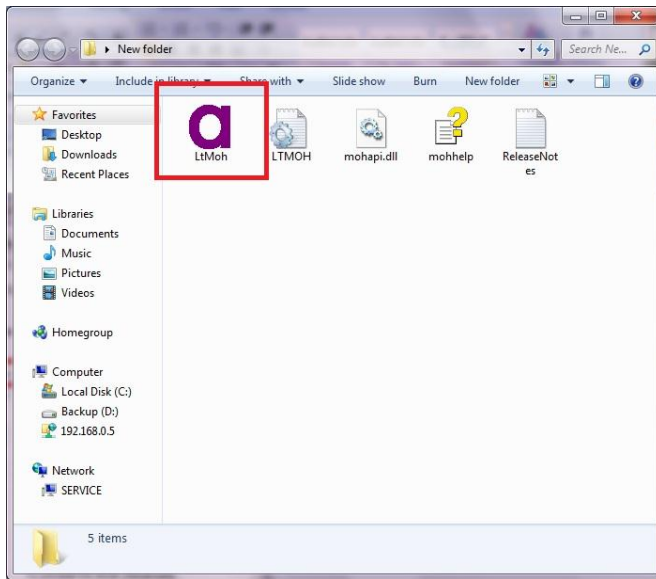
3. For SoftMOH procedure, please open the driver CD then “Software” folder, and copy the **SOFT\_MOH\_1790\_1** folder onto your desktop. Or, please create a new folder on your desktop, download & unzip the **SOFT\_MOH\_1790\_1** from <http://www.hiroinc.com/drivers>, and save all the files into this folder.

## Index of /drivers/H50006 H50158

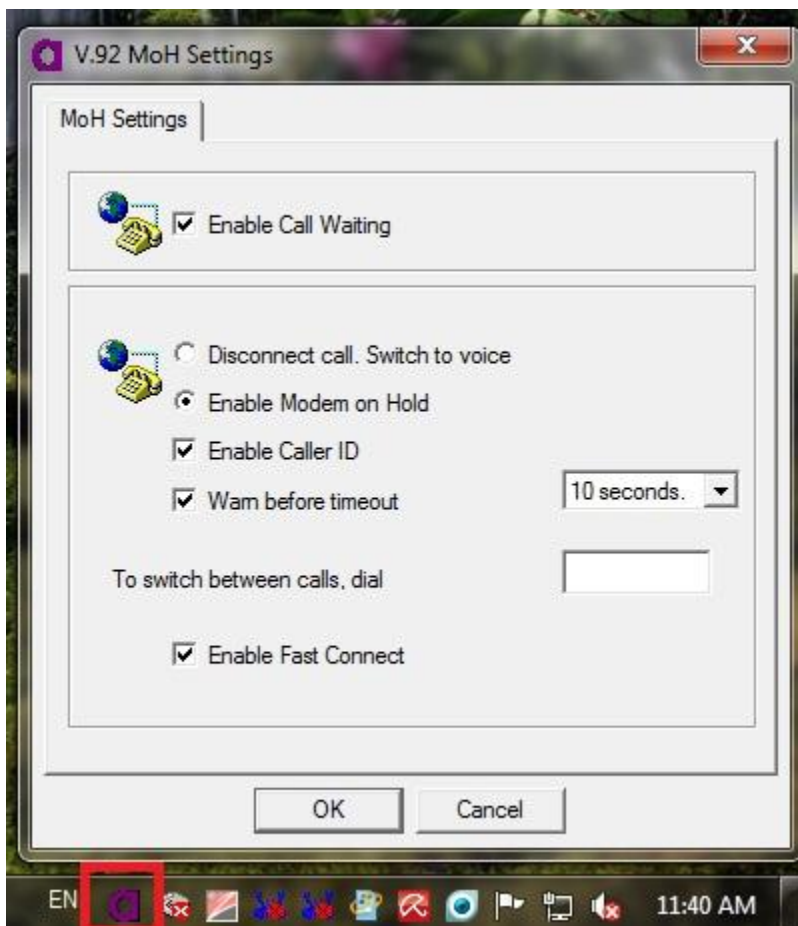
- [Parent Directory](#)
- [README.doc](#)
- [SOFT\\_MOH\\_1790\\_1.zip](#)
- [Windows 2000.zip](#)
- [Windows 7 32bit.zip](#)
- [Windows 7 64bit.zip](#)
- [Windows 98SE.zip](#)
- [Windows ME.zip](#)
- [Windows NT 4.0.zip](#)
- [Windows Server 2003.zip](#)
- [Windows Vista 32bit.zip](#)
- [Windows Vista 64bit.zip](#)
- [Windows XP 64bit.zip](#)
- [Windows XP.zip](#)



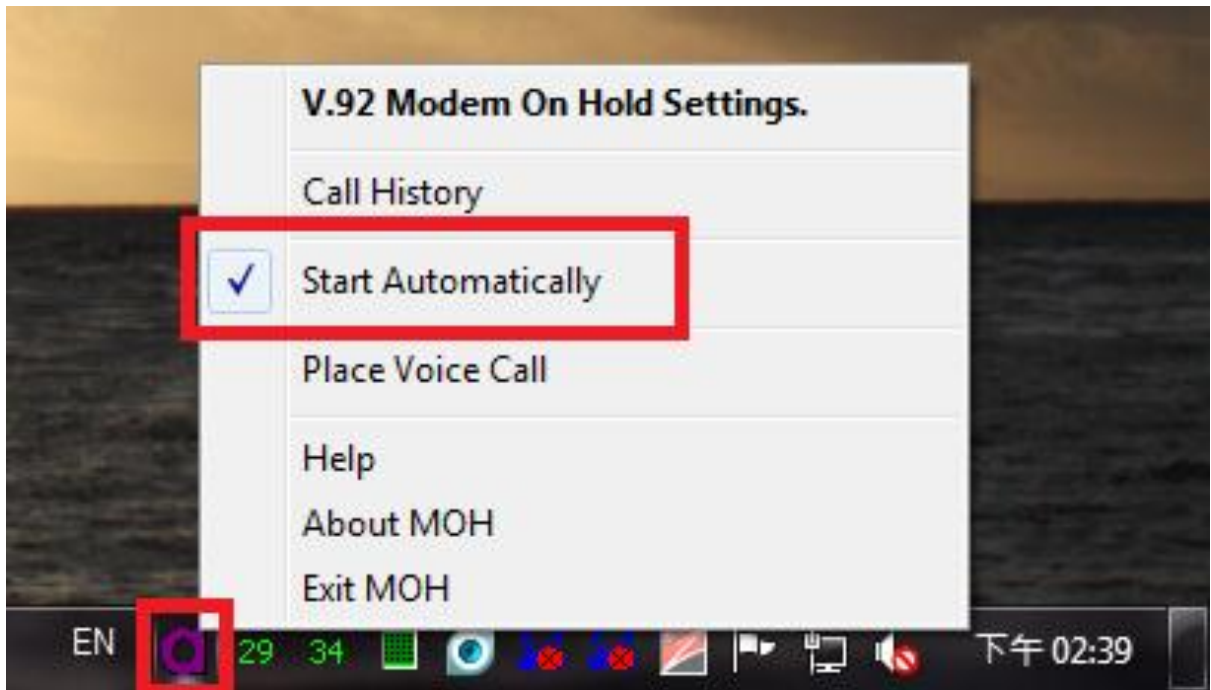
4. Double-click on the file "LtMOH.exe."



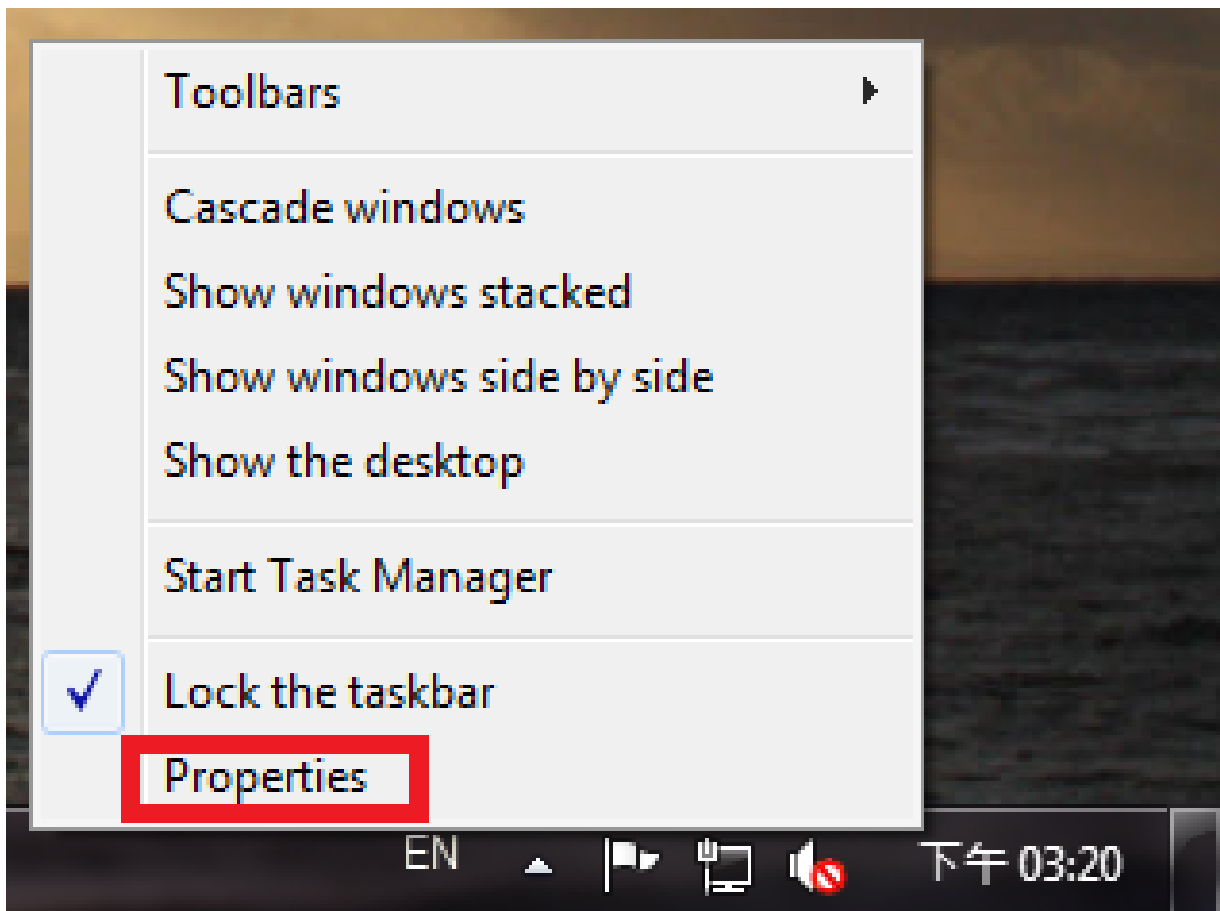
5. The purple 'a' should appear on the task bar. Left-double-click on the purple 'a' and you can bring up the Soft MOH menu. Please modify the setup as you prefer, and then click OK.



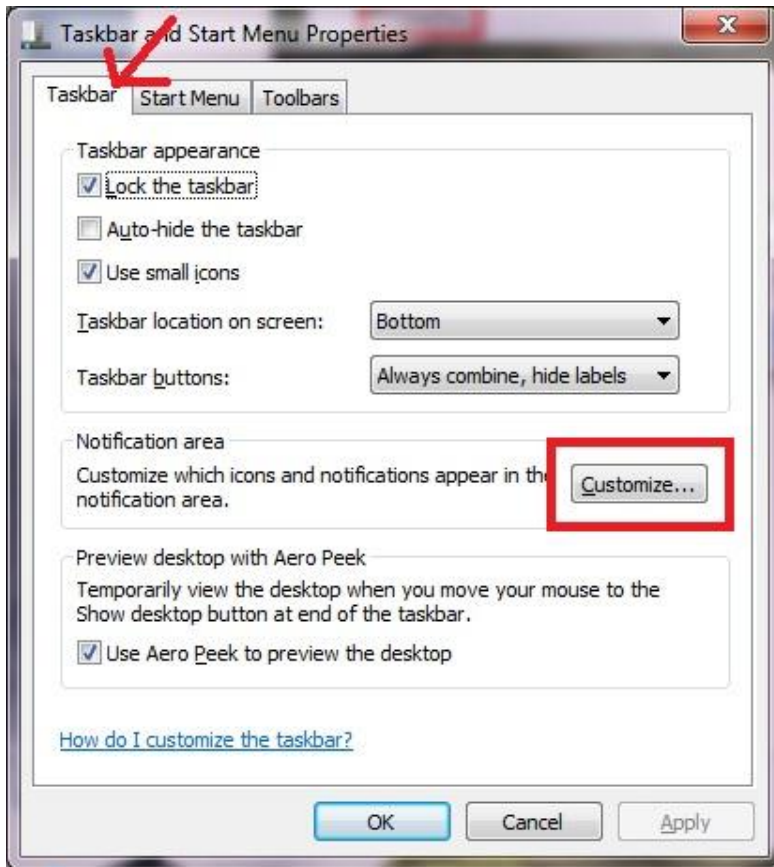
6. Right-click on the purple 'a' on the taskbar, and this should bring up the alternative menu. Please check the option "Start Automatically" so it won't have to be manually activated every time an internet connection is established.



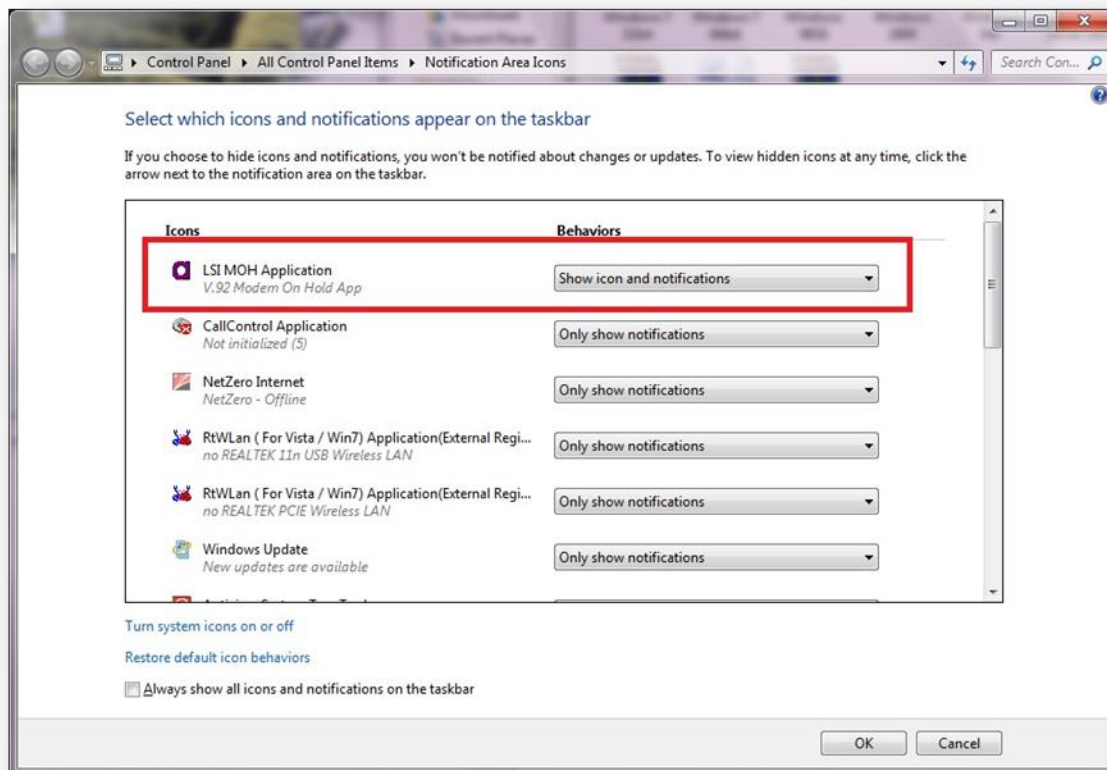
7. If you do not see the purple 'a' on the task bar, please move the mouse cursor to the blank area of task bar, then right-click and choose 'Properties'.



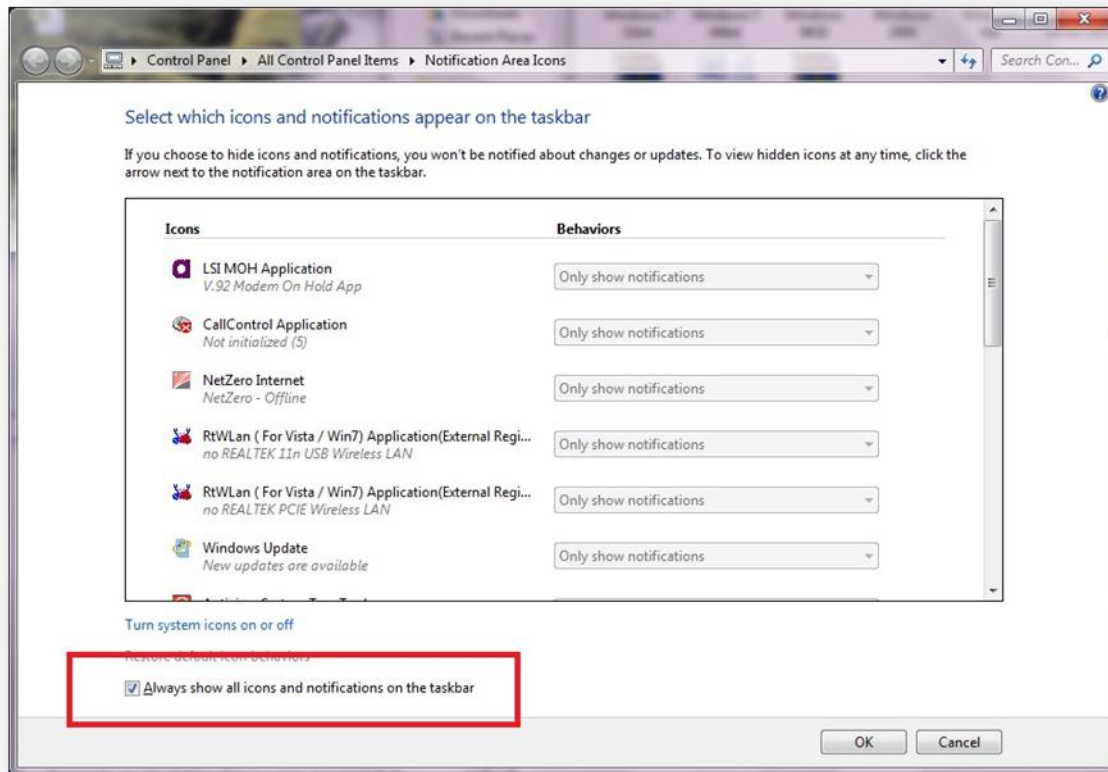
8. As the new windows of "Taskbar & Start Menu Properties" coming out, click on the tab "Taskbar", then click on the button "Customize".



9. A 2nd window will pop out and allow user to change whether the icon should appear and notify or not. Please scroll up/down to locate the purple 'a' (LSI MOH Application) and change the 'behavior' to "show icon and notifications".



10. Or user can simply check the option on the bottom of window, "**Always show all icons and notifications on the taskbar**", which will show everything, including the MOH application.



11. Click "OK" and close all the windows when everything is done. Now please go back to Step #4 and modify the setup if necessary.