

# HiRO 2.4GHz Wireless Keyboard, Mouse, & Touchpad

## User's Manual

Be sure to carefully read this User's Manual for the proper use and keep it for future reference.

Thank you for choosing **HiRO 2.4GHz Wireless Keyboard, Mouse, & Touchpad**. This genuinely palm-sized 3-in-1 device has four (4) function including standard American **QWERTY keyboard**, **Laser mouse**, **Multi-touchpad** and **Presentation control**. With our superb 2.4GHz technology, the wireless control distance is **up to 70 meters** (line of sight) with extreme low power consumption. Please read through this manual and then start enjoying the marvel and convenience this device brings at home, office or on travel.

©2011 All rights reserved.

### FEDERAL COMMUNICATIONS COMMISSION

This device complies with Part 15 of the FCC Rules. Operation is subject to the following two conditions: (1) this device may not cause harmful interference, and (2) this device must accept any interference received, including interference that may cause undesired operation.

#### NOTE

This equipment has been tested and found to comply with the limits for a Class B digital device, pursuant to Part 15 of the FCC Rules. These limits are designed to provide reasonable protection against harmful interference in a residential installation. This equipment generates, uses and can radiate radio frequency energy and, if not installed and used in accordance with the instructions, may cause harmful interference to radio communications. However, there is no guarantee that interference will not occur in a particular installation. If this equipment does cause harmful interference to radio or television reception, which can be determined by turning the equipment off and on, the user is encouraged to try to correct the interference by one or more of the following measures:

- Reorient or relocate the receiving antenna.
  - Increase the separation between the equipment and receiver.
  - Connect the equipment into an outlet on a circuit different from that to which the receiver is connected.
  - Consult the dealer or an experienced radio/TV technician for help.
- Changes or modifications not expressly approved by the party responsible for compliance could void the user's authority to operate the equipment.

### EU DECLARATION OF CONFORMITY

This product is carrying the CE-Mark in accordance with the related European Directives.

### Trademarks

Windows are registered trademark of Microsoft Corporation.

## Package Contents

1. HiRO 2.4GHz Wireless Keyboard, Mouse, & Touchpad.... X1
2. USB Receiver (Embedded onto the battery cover)..... X1
3. BL-5C Rechargeable Battery.....X1
4. Mini USB Charging Cable.....X1
5. User's Manual..... X1

## System Requirements

- Windows® 2000 / XP / Vista™ / 7
- An available USB port in PC

## Getting Started

### 1. Plug the USB receiver to PC USB port

Take out the USB receiver embedded onto the battery cover and plug the USB receiver to your PC USB port.

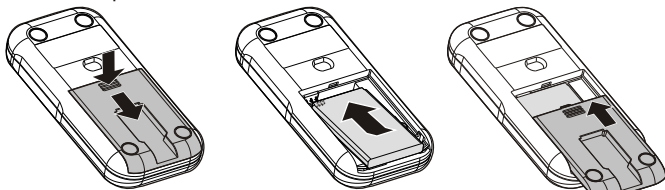


Steps of taking out USB receiver

Steps of inserting USB receiver

### 2. Insert the battery

Slightly press and slide the battery cover and insert the battery firmly with the correct polarity. Replace the battery cover firmly back into place.



Slightly press and slide the battery cover

Insert the battery

Replace the battery cover

### Special notice

**Before 1st time use**, please connect the battery charging cable to charge the battery about 2 hours. See the introduction of "Low Battery Indication and Charge Battery" for battery charging.

Now you can start to use **HiRO 2.4GHz Wireless Keyboard, Mouse, & Touchpad**. Please note that the default mode of computer mouse is at Multi-Touchpad. For details of mouse mode change and other function and operation, please read the introduction of "Function and Operation".

## Low Battery Indication and Charge Battery

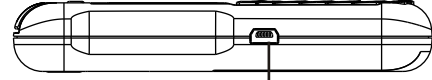
### 1. Low battery indication

When battery power is detected at low capacity, press any key, button or touchpad of keyboard mouse, its **red indication LED** will light up to remind you battery power is low. Please charge the battery soon to have a stable performance.

### 2. Charge battery

Connect supplied battery charging cable between this product and the USB port in your PC to charge the battery. During charging, red LED will regularly blink and when the battery is fully charged, the red LED will off.

**Note** Battery charging time depends on remaining battery power, operation condition and working environment etc. Besides, the rechargeable battery has a certain life of charging cycles and when you find charging time becomes extra longer, you may need to replace with new rechargeable battery.



Connection port for battery charging cable

## ID Pairing

**Note** No need to conduct ID pairing whenever you want to use this product, **UNLESS** following operation situation.

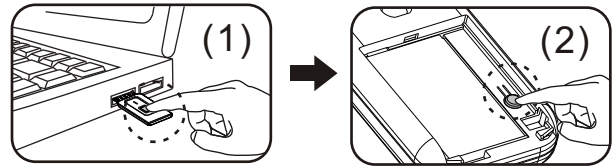
**Battery power is normal and keyboard mouse and USB receiver is within connection distance but the product cannot be operated OR when you want to use plural of this product at the same time.**

You need to conduct ID pairing with following two (2) steps to shun interference:

- (1) Click the ID Link button on USB receiver and its red LED will light up and enter into **20-second** ID pairing stand-by time.

**Note** If pressing again the ID Link button during 20-second stand-by time, ID pairing action will be discontinued.

- (2) Within the 20-second stand-by time, press the pairing button in the battery chamber of keyboard mouse until the red LED of USB receiver becomes blinking for 3 times which means the ID pairing has been successfully done.



## Specifications

- Frequency : 2400 ~ 2483 MHz
- Channel number : 16
- ID number per Channel : 65,535
- Modulation : GFSK
- Antenna type : PCB track
- Wireless range : Up to 230 feet (70 meters) (line of sight)
- Working voltage : DC 3.0V ~ 3.8V
- Battery : BL-5C 850mA-hour Li-Ion rechargeable battery
- Transmission power : 1mW
- Power consumption / Battery continuous operation hours :
  - Standby(Non-operation) : 0.4mA / 2125 hours
  - Keyboard mode : 1mA / 850 hours
  - Touchpad mode : 10mA / 85 hours
  - Laser mouse & Touchpad mode : 30mA / 28.3 hours
- Weight : About 92 grams (including battery and receiver)
- Dimension : Approx. 116 (L) x 56 (W) x 19.8 (H) mm
- Operation temperature : 0°C(32°F)~60°C(140°F)
- Operation humidity : 10%~85% RH

## FAQ

### Q1. Need to install software before using this product?

A: No need. This is Plug-and-Play product.

### Q2. Why sometimes touchpad can not be operated smoothly?

A: Touchpad is quite sensitive about moistness. In order to have a stable performance on touchpad, please always keep touch finger(s) dry.

### Q3. Can not control laser mouse, touchpad and keyboard

A: It may be caused by low battery or interference by other 2.4GHz product. Please see introductions "Low Battery Indication and Charge Battery" and "ID Pairing" to verify and resolve.

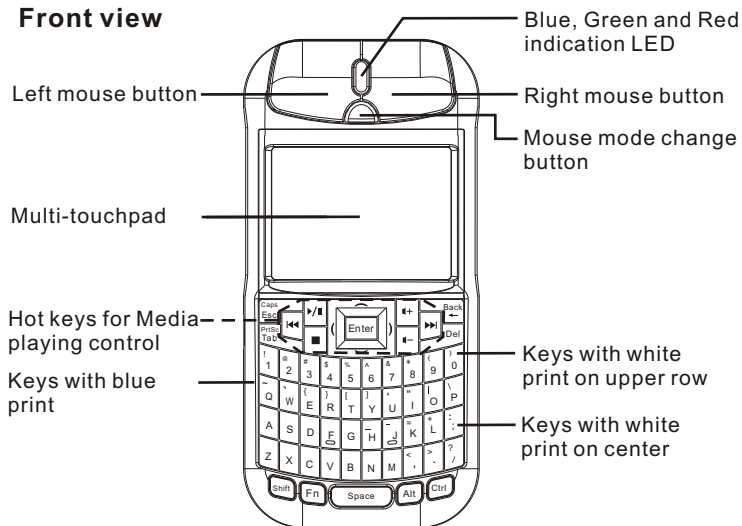
### Q4. Possible to know the mouse dpi?

A: It is no way to know mouse dpi and you can only feel laser mouse move speed after selected dpi.

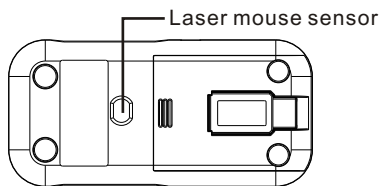
Patent Pending

## Function and Operation

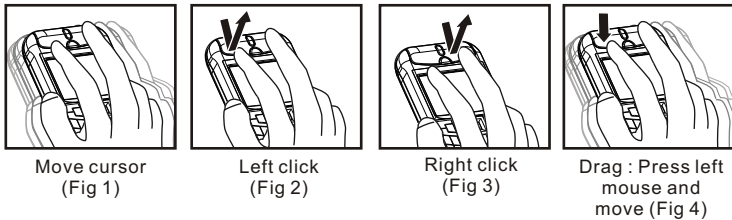
### Front view



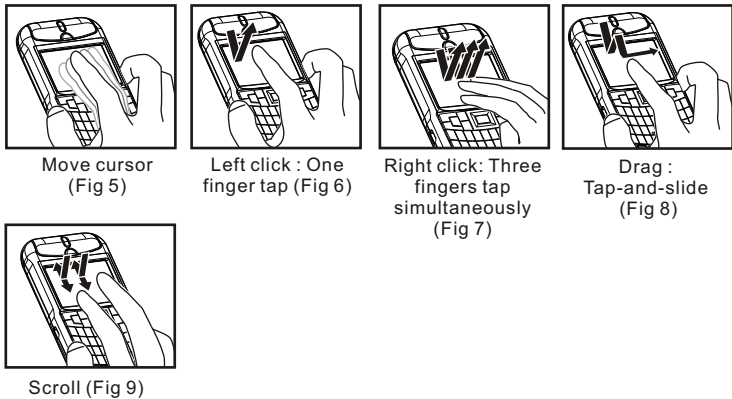
### Rear view



#### ■ Images of Laser mouse operation



#### ■ Images of Multi-touchpad operation



### 1.QWERTY keyboard

QWERTY keyboard function is always available no matter the computer mouse is set at Laser mouse mode or Multi-touchpad mode or even mouse function is turned off.

| Key print                          | Function and Operation   |
|------------------------------------|--|
| White print on key center          | Directly press the key to have print function  |
| White print on upper row           | Press and hold "Shift" key and then press the key to have print function   |
| Blue printing character            | Press and hold "Fn" key, then press the key to have print function   |
| F1~F10 function (numeral key 1~10) | Press and hold "Fn" key, then press the numeral key 1~10 to have F1~F10 function   |
| Media playing control hot keys     | When at Media playing application, directly press the key to have print function<br><b>Note</b> 4 arc-shape keys around "Enter" key i.e. "( ) ~ ~" have the same function as 4 arrow keys i.e. "↑ ↓ → ←" on PC keyboard. |

**Note 1** The "Alt" key is normal "Alt" function, not "Alt Gr" function. You can press "Ctrl+Alt" together to have "Alt Gr" function.

**Note 2** Only 8 keys including "Back", "Del", 4 arc-shape keys "( ) ~ ~", "Fn" and "←" have repeated function when they are press-and-hold.

### 2.Laser mouse (Match with blue indication LED)

When switch to Laser mouse mode, not only main / left / right mouse but also part of multi-touchpad function can be used.

| Function            | Operation  |
|---------------------|--|
| Mouse mode change   | (1) Press and hold this button until blue and green LEDs both light up (PS : It may look like white LED) to turn off mouse function. Click this button to activate mouse function with the default mode of Multi-touchpad.<br><b>Note</b> 1~2 seconds is needed to activate touchpad function from mouse off mode<br><b>Note</b> Keyboard function is still available even mouse function is turned off.<br>(2) When the mouse function is activated, click the button to switch modes between Laser mouse and Multi-touchpad. |
| Blue indication LED | Light up when mouse or touchpad is under use   |
| Cursor move         | See Fig 1  |
| Left mouse click    | See Fig 2 and Fig 6<br><b>Note</b> At Laser mouse mode, left click function can be operated by above either way  |
| Right mouse click   | See Fig 3  |
| Mouse drag          | See Fig 4 and Fig 8<br><b>Note</b> At Laser mouse mode, drag function can be operated by above either way  |
| Scroll              | See Fig 9<br><b>Note</b> Two (2) fingers <u>simultaneously</u> slides (or one finger puts on touchpad while the other finger slides) up or down on touchpad.   |
| Mouse dpi selection | Press and hold "Fn" key and then click the mouse mode change button to change mouse dpi among 1700, 2500 and 3400<br><b>Note</b> This dpi selection function is only available at Laser mouse mode. Default dpi is 3400. Take out and insert battery again, mouse dpi will return to default figure.   |

### 3.Multi-touchpad (Match with green indication LED)

When you switch to Multi-touchpad mode, not only touchpad but also left / right mouse buttons can be used.

| Function             | Operation  |
|----------------------|--|
| Mouse mode change    | Please refer to the "Mouse mode change" at the introduction "2. Laser mouse"   |
| Green indication LED | Light up when touchpad is under use  |
| Cursor move          | See Fig 5  |
| Left mouse click     | See Fig 2 and Fig 6<br><b>Note</b> At Multi-touchpad mode, left click function can be operated by above either way   |
| Right mouse click    | See Fig 3 and Fig 7<br><b>Note</b> At Multi-touchpad mode, right click function can be operated by above either way.   |
| Mouse drag           | See Fig 8  |
| Scroll               | See Fig 9<br><b>Note</b> Two (2) fingers <u>simultaneously</u> slides (or one finger puts on touchpad while the other finger slides) up or down on touchpad. |

### 4.Presentation control device

Use this product at PowerPoint slide show as wireless presentation remote. Turn to the slide page of PowerPoint file you want to present and let it at slide start screen (i.e. full screen). Use following keys and buttons to enjoy a wireless and my-pace slide show.

| Key or button               | Function and Operation   |
|-----------------------------|--|
| Fn + 5                      | Press and hold Fn, then press the numeral key "5" to have "F5" function to start the slide show  |
| Caps Esc                    | Click this key to exit slide show  |
| Left mouse button or ~ or ) | Click any of left button or key to go to next slide  |
| ~ or (                      | Click either key to go to previous slide   |
| B key                       | Click this key to show black screen; click again to come back  |
| W key                       | Click this key to show white screen; click again to come back  |
| PrtSc Tab + Alt             | Press and hold "Alt" key and then click "PrtSc Tab" key to cruise all opened files one by one. When cruising at the file you want to switch, just release 2 keys and file will be switched. Use the same process to other file or return to slide show |